

SIMON RAAB

Born in Toulouse, France. Lives and works in Santa Barbara, CA, USA

SEARCH THE ARTIST ONLINE

www.simonraabgallery.com



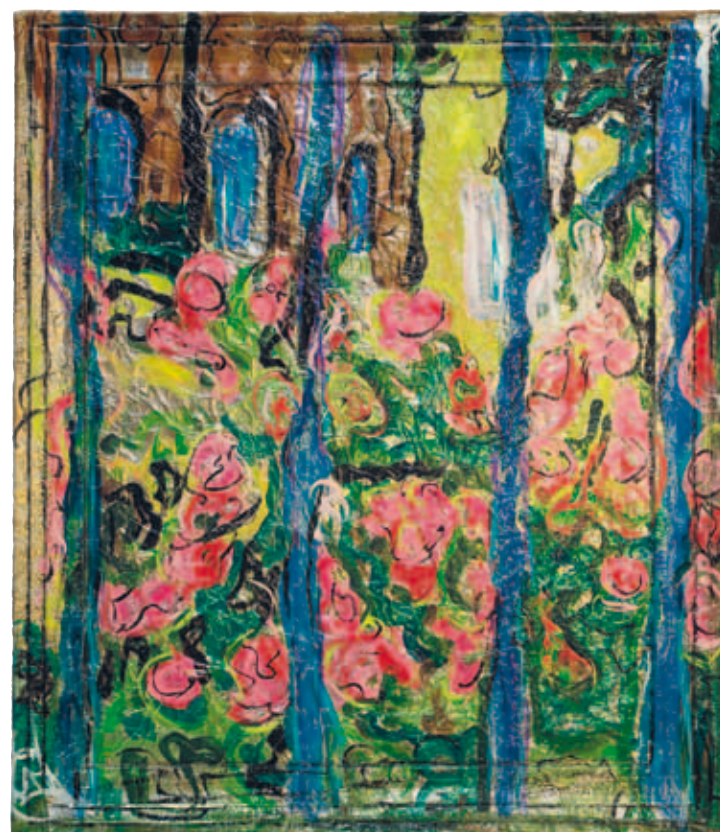
I am compelled by confusion with reality. We can never truly see or understand any object or any situation with any confidence. I cannot help but wonder if what I see is real, who is who and what is what. It is not revisionist history; it is revisionist present. In my art, I am expressing my humility. My early college years were marked by a degree in physics and I continue to see reality expressed either in mathematical or philosophical terms. Chaos surrounds us and confusion is predictable. The visible spectrum we live in is only a tiny fraction of the full spectrum of what really

is. We see deformable space, particles in two places at the same time and flowing probabilities. Alas, to be closest to reality we must let go of our preconceptions and false anchors.

I am attracted to neither the abstract nor the figurative, but rather the transition and confusion between the two. I find comfort in a figurative form and I am compelled to abstract it by deforming the surface. The result is a change in the pattern of colours and an altered way in which light is reflected. In my work, you may see something fleetingly familiar

and comfortable, and my hope is to then take that away from you. It is all temporal, undefined, chaotic and uncomfortable. In the frustrating discomfort, I want you to relax and float on the turbulence of not knowing. My art form is called Parleau, derived from the French "Par l'eau", which means "through the water." It is a combination of painting and sculpture-images enamelled on metal foil and then formed by hand to different

degrees of spatial reflective abstraction. It is a creative and destructive process, which adds a random moving character to the surface. Parleau evolves to simulate the essence of seeing images through the rippling surface of water which constantly change. The image of a face is at one moment kind, at another moment angry and cruel. By its very nature, something, which is always changing can never be an absolute.



↑ **FROM BEHIND THESE BARS #6**, 2010 POLYMERS & STAINLESS STEEL ON WOOD FRAME 55,5X48 IN. /142X123 CM.

← **TIBETAN FLAGS**, 2008 POLYMERS & STAINLESS STEEL ON WOOD FRAME 56,5X40 IN. /144X100 CM.

LILLIES, 2010 POLYMERS & STAINLESS STEEL ON WOOD FRAME 45,5X55,5 IN./116X142 CM. →

